

Instructions for use

Comfort Shield® SD

(Hylan A fluid, 0.15 %)



Description

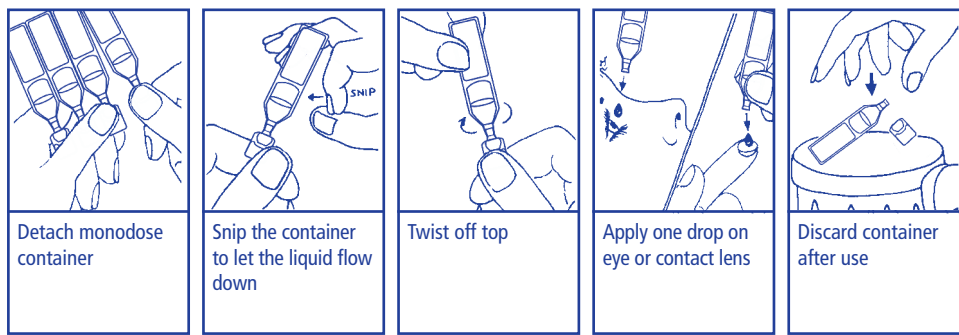
Comfort Shield is a sterile, preservative free, viscoelastic, clear shield for the cornea. It consists solely of substances that are natural components of the eye. Therefore, **Comfort Shield** does not create any allergies and can also be used by allergic persons. **Comfort Shield** imitates the function of the natural tears, protects and moistens the eye surface and lubricates it. This provides long-lasting relief for eyes that are dry due to:

- Keratoconjunctivitis sicca (Sjögren syndrome)
- Injuries to the cornea, erosions, corneal surgery
- Wearing contact lenses
- Hormonal disturbances (menopause)
- Air conditioning, wind, cold, dry heat, dust, smoke, air pollution
- Work at a computer screen, long car driving, long-haul flights
- Swimming in chlorinated water

Ingredients

0.15 % Hylan A, sodium chloride, sodium hydrogen phosphate, sodium dihydrogen phosphate and purified water

Instructions for use



By gently massaging the eyelids with the eyes closed, the product will spread more quickly across the surface of the eye after application.

Storage

Store between 2°C and 25°C. Protect from frost.

Precautions and warnings

- Do not use, if the monodose container is damaged.
- Do not allow the monodose container to touch your eye.
- Because of the risk of contamination, avoid contact the opening of the monodose container with other surfaces or your hands.
- Do not use at the same time with other topical eye medications.
- Do not apply to infected eyes.
- After use, visual acuity may be reduced temporarily; in this case do not drive or operate machinery and wait until normal vision is restored.
- Dispose the monodose container after use with household waste.

Pack size

Monodoses 15 x 0.3 ml

Manufacturer

i.com medical GmbH
Kafflerstr. 15, 81241 Munich, Germany
www.icom-medical.de

